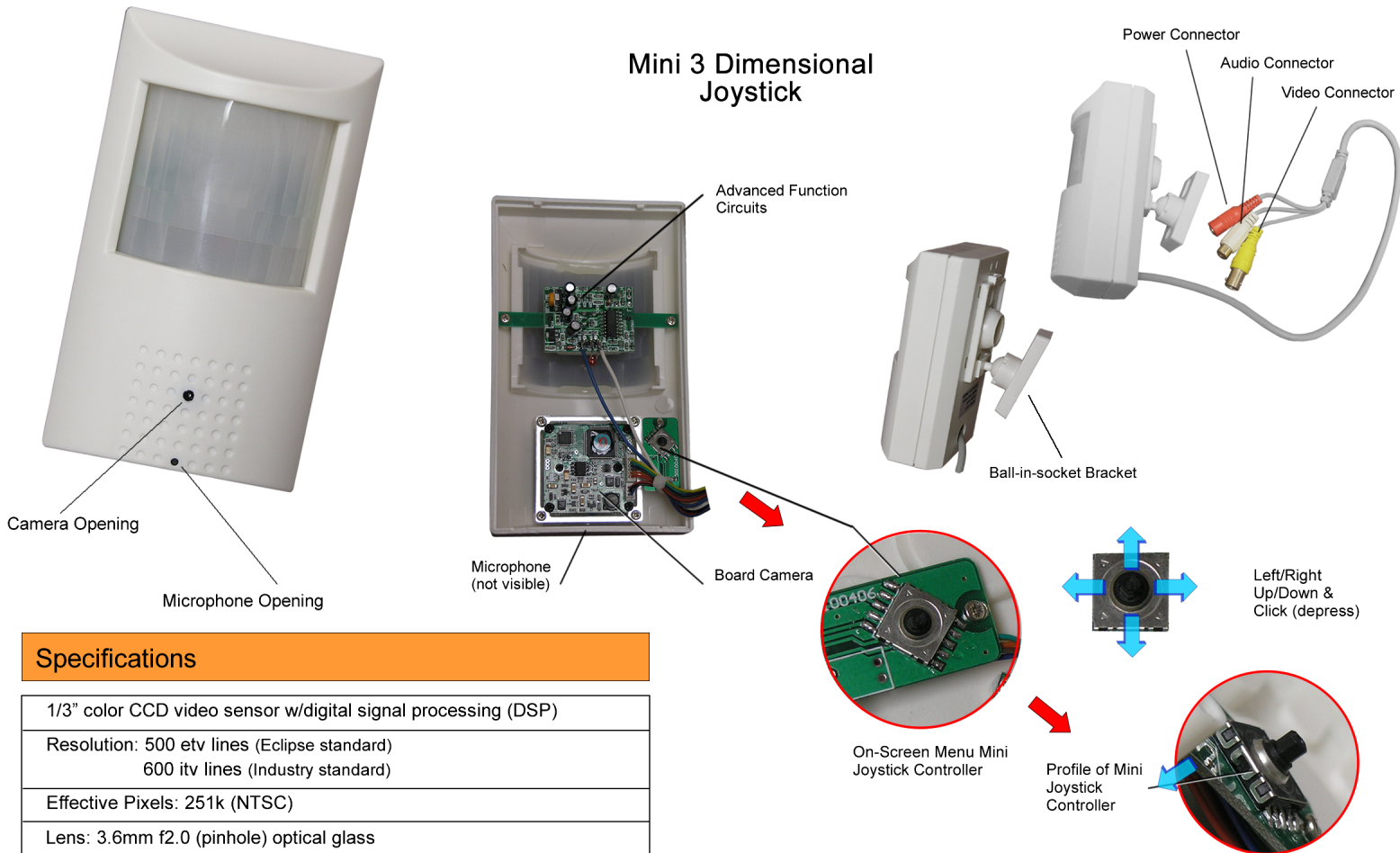


### Hidden Camera with Microphone, WDR & OSD Menu

A built-in microphone is only the beginning of the premium features available in this hidden camera. Tucked away inside the case is a tiny mini 3D joystick that gives you access to the on-screen display (OSD) menu. Use the menu to program advanced functions that include 4 levels of wide dynamic range (WDR), gain adjustment, back light sensitivity and high light masking (HLM), and more.



### Specifications

1/3" color CCD video sensor w/digital signal processing (DSP)
Resolution: 500 etv lines (Eclipse standard) 600 itv lines (Industry standard)
Effective Pixels: 251k (NTSC)
Lens: 3.6mm f2.0 (pinhole) optical glass
Lens Angle: 90° field of view
Minimum Illumination: 0.6 LUX
Adjustable Electronic Shutter: AES (1/60 to 1/100,000 seconds)
Video Output: composite analog signal, 1Vp-p, 75 ohms impedance
Audio Output: analog signal, 2Vp-p, 75 ohms impedance
Motion Detection Range: Video based, turned on/off through OSD menu. When turned on an icon will appear in the upper right corner of the video monitor when motion is detected.
Power: 12VDC @170mA nominal (sold separately)
Operating Temperature/Humidity: -10°C to 50°C 14°F to 122°F 0-90% non condensing
Dimensions: 70mm(W) x 110mm(H) x 49mm(D) 2.76" x 4.33" x 1.93"
Weight: 4.6oz (129g)
User/Installation/Setup manual, wiring schematic, installation kit and swivel mount bracket included.

### On-Screen Display Menu (OSD Menu)

Program advanced features of this camera using the OSD menu. Access the menu using the 3D mini joystick controller, inside the case. The controller moves left/right, up/down, and "clicks".

EXPOSURE: ALC (auto level control)/Off  
BR LEVEL: (brightness) 0-100  
AGC: On/Off  
AGC LIMIT: 0-63  
BACKLIGHT: SSWDR1, SSWDR2, BLC, Off

HLM: (high light mask) On/Off - masks intense sources of bright light striking the lens, such as car headlights, insuring picture quality.

MIRROR: On/Off  
DAY&NIGHT: B/W, Auto, Color  
M-DET.: (motion detection) On/Off  
EXIT: Leave menu & save settings

```

EXPOSURE  ALC
BR. LEVEL  46
AGC        ON
AGC LIMIT  63
BACKLIGHT  OFF
HLM        ON
MIRROR     ON
DAY&NIGHT  AUTO
M-DET.     OFF
EXIT
    
```

**ATTENTION: This product DOES NOT contain infrared motion detection circuitry. It uses VIDEO BASED MOTION DETECTION.**