

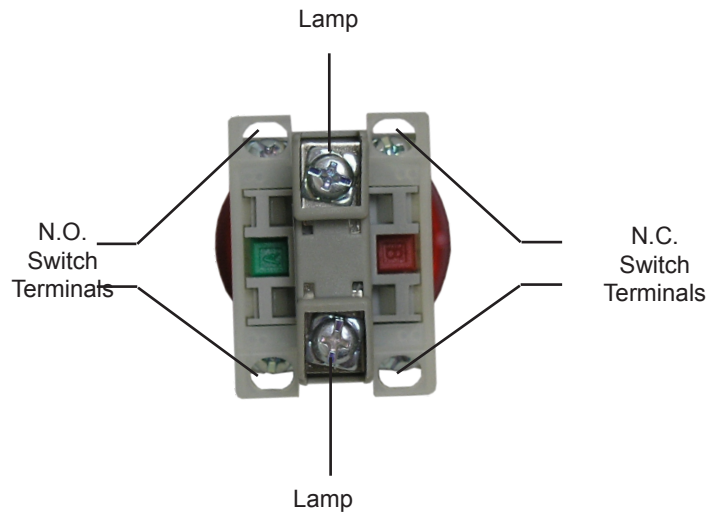
COR-ACC400IL

ILLUMINATED RED PUSH-TO-EXIT BUTTON



Push-To-Exit Button with Red Lamp

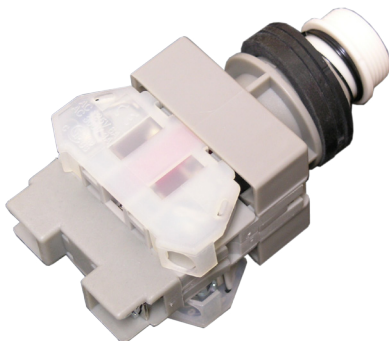
This illuminated push-button switch has a stainless steel one-piece wall mount bracket with stamped and painted legend. Brightly lit with an incandescent bulb behind the translucent red button top, it is designed for high visibility and is impossible to ignore in the dark. Switch contacts are dual rated at 6A/125VAC and 3A/3000VAC. The bulb needs a separate 12VDC supply and draws a minimal current.



SPECIFICATIONS

GENERAL SPECIFICATIONS	
Construction	Stainless steel
Lamp	Clear incandescent bulb
Lamp power	12VDC
Switch type	N.O. & N.C (both available)
Contact Rating	6A when using 25VAC, 3A when using 300VAC (dry contacts)
Wall mount bracket	Stainless steel
Dimensions	120mm x 76.2mm x 4mm 4.7 inches x 3 inches x .16 inches
Package includes installation kit and switch diagram.	

Switch is easy to disassemble for cleaning or to replace the incandescent bulb



COR-ACC400IL

